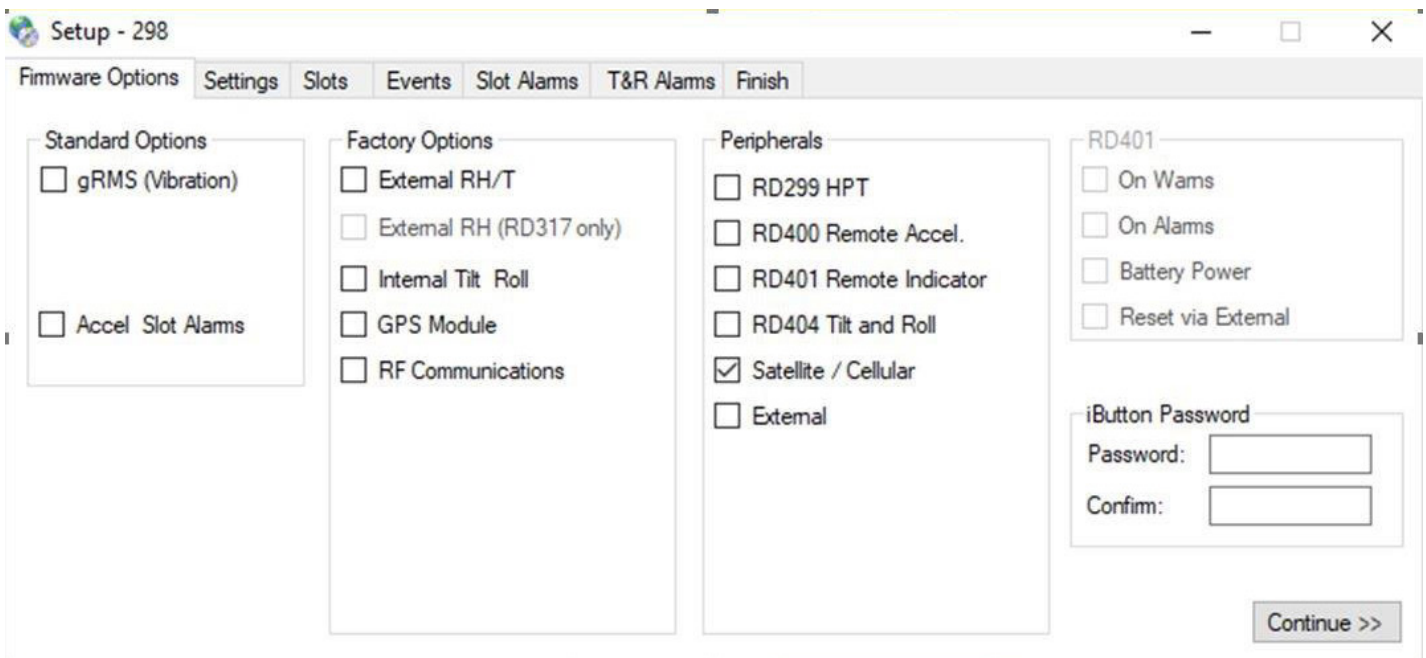


OVERVIEW

The ShockLog® Cellular Module may be used with any ShockLog 298 Impact Recorder with firmware revision 30 or greater.

SHOCKLOG SETUP

When a ShockLog Cellular Module is to be paired with a ShockLog 298, the user must select the Satellite / Cellular option on the Firmware Options page of the ShockLog setup software. This establishes the communication link between the recorder and the cellular module.



All other aspects of the ShockLog setup – slot alarms, event alarms, etc. remain the same as for a standard ShockLog setup. Refer to the ShockLog Quick Start Guide or ShockLog User Manual for complete setup instructions.

SHOCKLOG CELLULAR MODULE BATTERY INSTALLATION

Unscrew the Battery Panel (see image to the right). Requires a Phillips screwdriver to complete this step.

Install the six (6) AA batteries provided in the direction noted in each battery slot, verify that the gasket is in place and replace the battery panel making sure that the certification label is visible. Tighten the screws on the battery panel to preserve IP 67 rating.



SPOTSEE CLOUD

SpotSee Cloud allows you to access information about your shipment anytime, anywhere. Simply login at cloud.spotsee.io to review your journey information, view alarm conditions, summary (maximum values for user defined period) and asset location.

COMMUNICATION MODULE ACTIVATION & SPOTSEE CLOUD

ShockLog Cellular communication modules require activation prior to use.

To activate a communication module:

- Establish an account admin for the SpotSee Cloud. This step is required for the first connected device purchased from SpotSee
 - a. Navigate to activate.spotsee.io to begin the process
 - b. Enter the Customer Number found on your packing list, invoice or order acknowledgement documents
 - c. Enter the Unit ID found on the equipment
 - d. Accept the Terms & Conditions
 - e. Enter the admin email in the pop-up box and click Enter
 - i. An email will be sent with a link for setting up the admin account password
 - ii. Follow the link to create the password
- **Note:** Step e will not be needed if the admin account already exists
- Select the available contract for the communication module
 - a. Click the dropdown list to select a contract
 - b. Click Activate
- The cellular communication module is now activated

FOR QUESTIONS OR TROUBLE SHOOTING PLEASE CONTACT TECHNICAL SUPPORT

Email: techsupport@spotsee.io

SpotSee Canada & Americas:

US: +1 800-466-0101 **Outside US:** +1 214-736-4579

SpotSee Europe, Middle East, Africa: +31.55.7370 148

SpotSee Asia-Pacific: +86 (21) 6627 6008